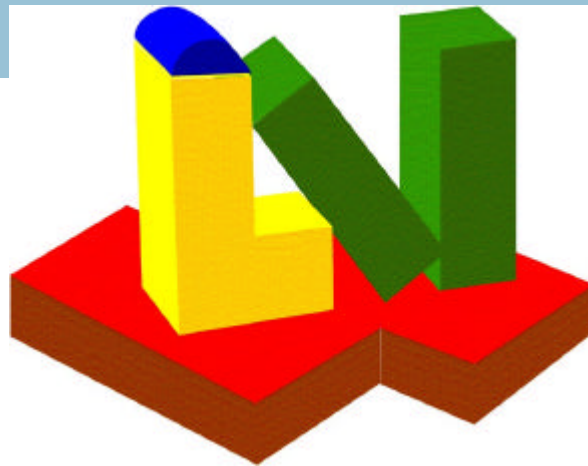


LAUTERBACH
VERFAHRENSTECHNIK

LV and Solid Works Parts



<http://www.LV-Soft.com>

Contents

SolidWorks and LV	4
Cylinders, cones, heads	8
Dished head	9

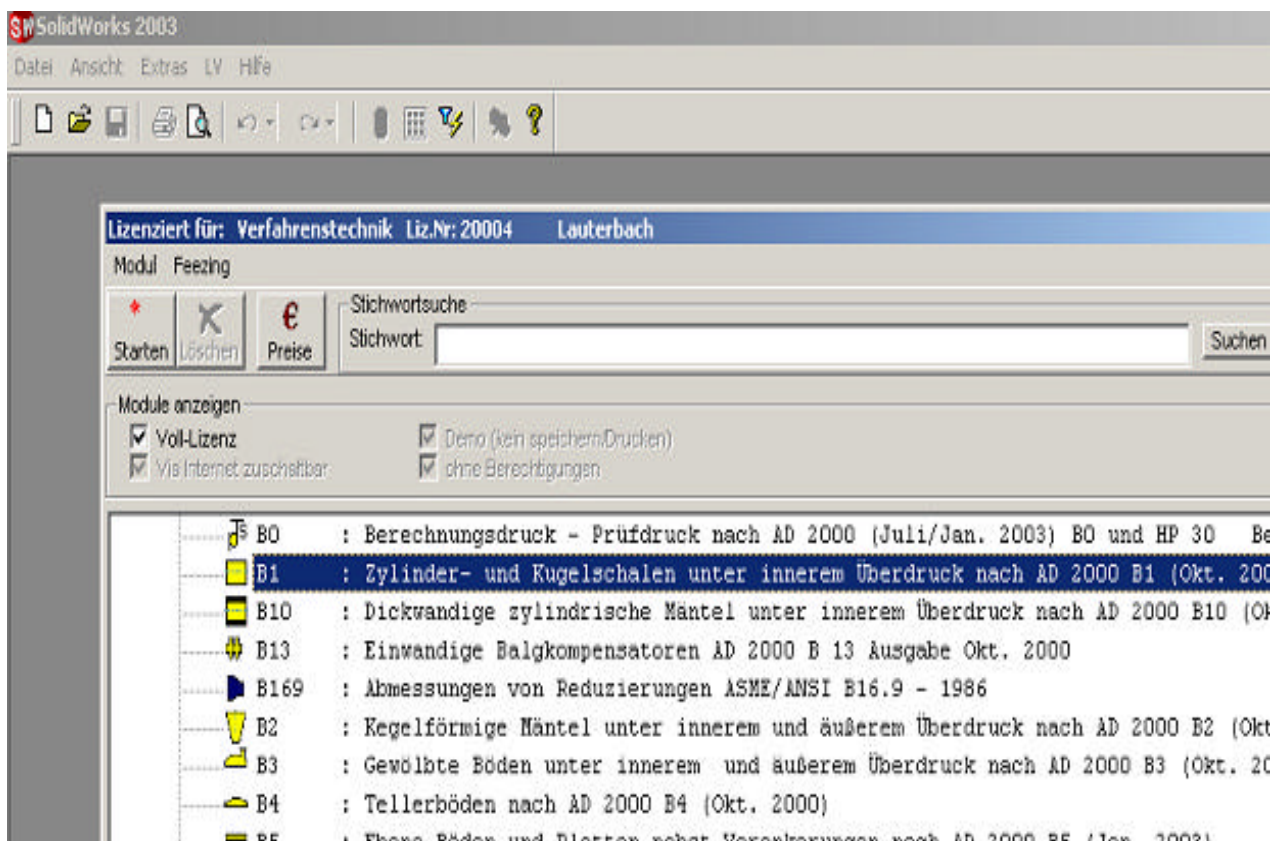
SolidWorks and LV

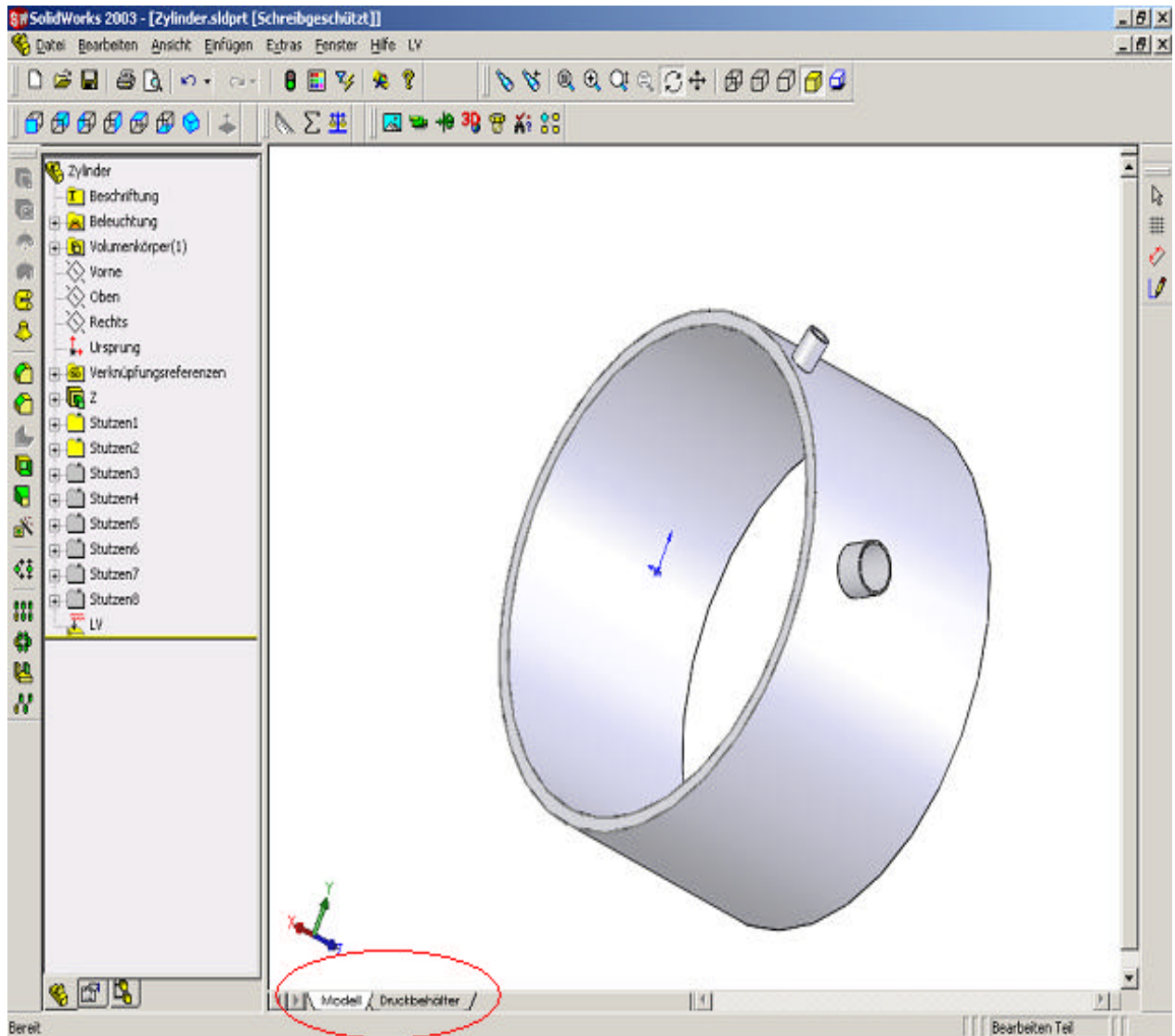
LV programs are easily integratable into SolidWorks similar to the integration of LV modules into MS EXCEL. Only an additional program library for SolidWorks is needed. This librarie is available at LV.

This additional library for SolidWorks enables you to generate individual parts directly in SolidWorks.



If you select a part which can be displayed in SoliWorks in the SolidWorks LV plugin, this part is generated in SolidWorks and the calculation per AD2000, EN 13445 or ASME VIII etc. is integrated into the construction.





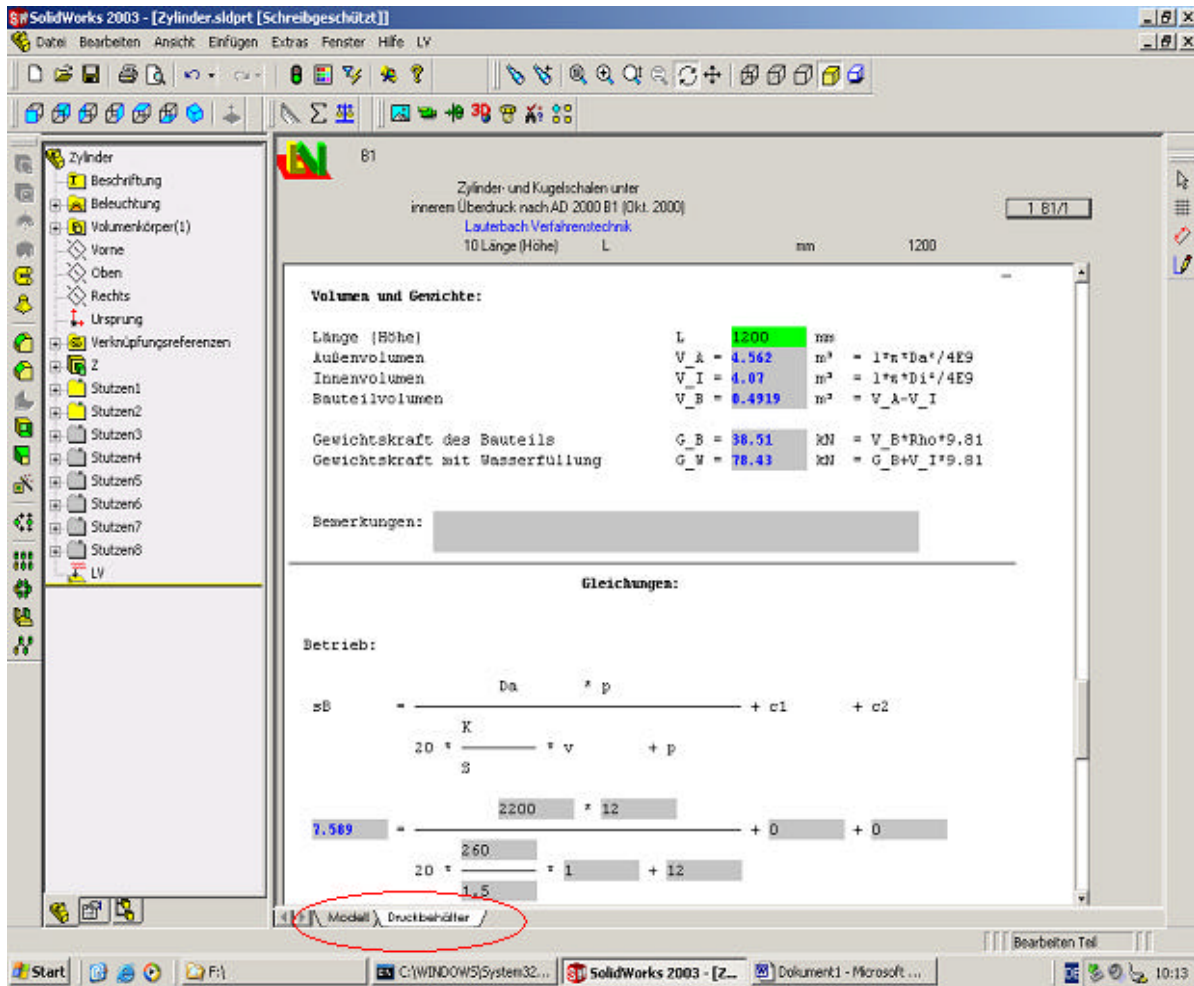
There is a **steady bidirectional data exchange** between construction done by SolidWorks and calculation done by LV.

While SolidWorks is constructing, LV checks this construction according to the selected design rules or calculation standards. Changes in the construction are directly influencing the calculation. Changing a relevant calculation parameter in the LV module is immediately effecting the construction model.

Changes in the calculation are directly influencing the construction.

The calculation is saved with the constructed part.

When creating assemblies every single part can be calculated with LV. The calculation data are saved with the assembly.

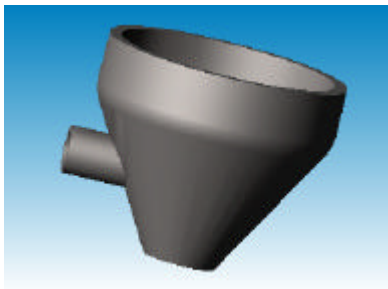




Part: Cylinder

Standard: AD 2000; ASME; TRD301; EN

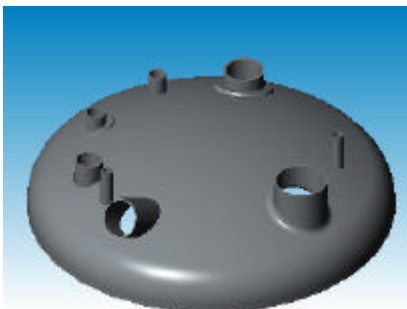
**LV module: B1
UG27
EN
301
IGEL**



Part: Cone

Standard: AD 2000; ASME; EN

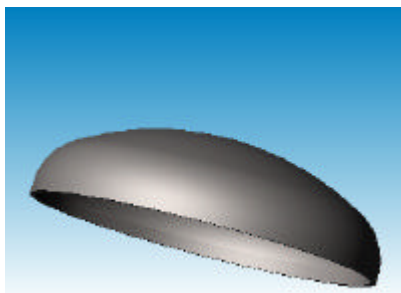
**LV module: B3
UG32
EN 07**



Part: Head

Standard: AD 2000; ASME; TRD303; EN

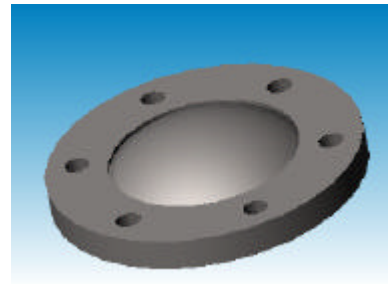
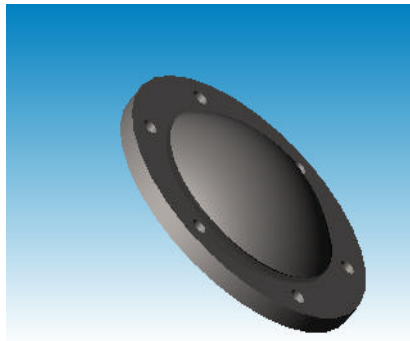
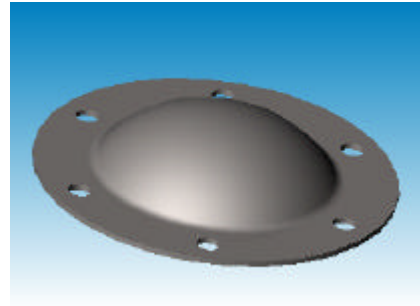
**LV module: B3
UG32
303
EN 07**



Part: Dished head

Standard: AD 2000; ASME; EN

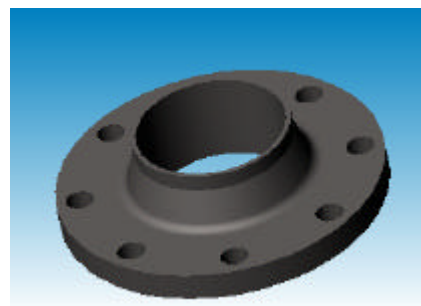
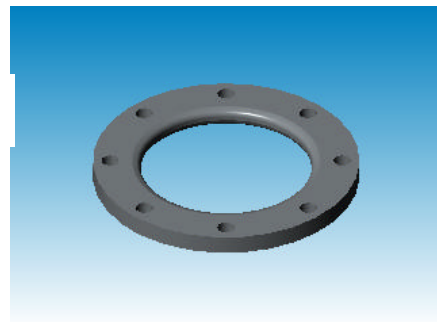
**LV module: B9
B4
ATB
EN 07**



Part: Flanges

Standard: AD 2000; ASME; EN 13445; DIN 2505; EN 1591

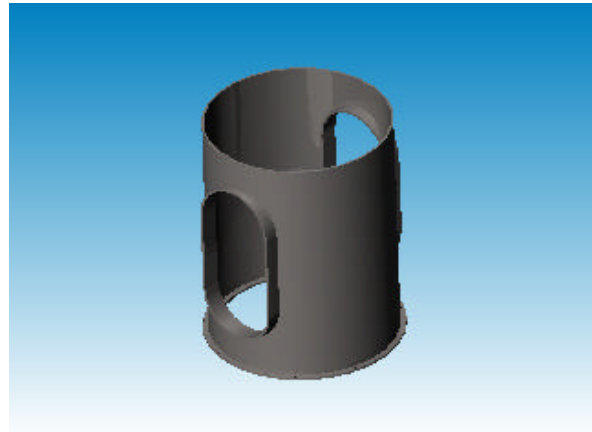
**LV-Module: B7, B8
AFL
EFL, 1591,
25V, 2505**



Part: Skirt support

Standard: AD 2000; EN

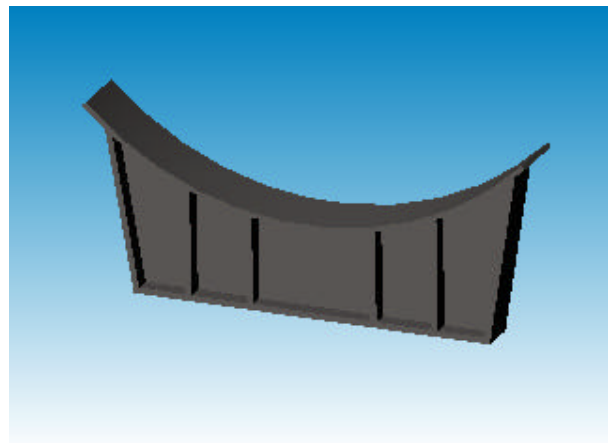
**LV module: S31
EN**



Part: Saddle

Standard: AD 2000; EN

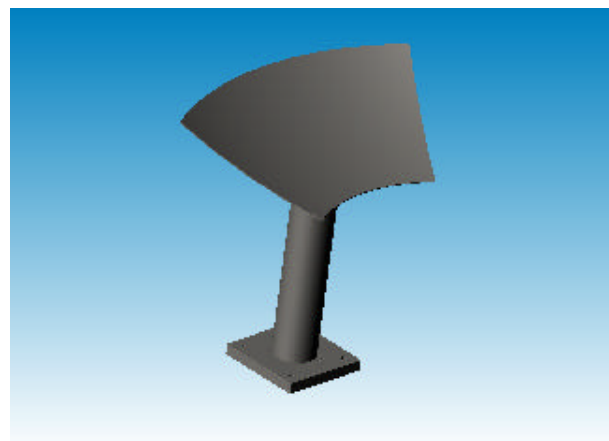
**LV module: S32
EN**



Part: Leg support

Norm: AD 2000; EN

**LV-Module: S33
EN**



Part: Lug support

Standard: AD 2000; EN

**LV module: S34
EN**

